

How Well Do You Know Your Waterways?

Use the information you have learned about the inland waterways under the care of Waterways Ireland to complete the following activities

Question Time!

1. Name the longest river in Ireland? _____
2. How are the locks operated on the following navigations:
The Grand Canal _____
The Shannon-Erne Waterway _____
The Shannon Navigation _____
3. Name the waterway which re-opened in 2010 after restoration works were completed?

4. Which navigation is renowned for its stock of brown trout? _____
Can you name the section on the river that is associated with the stock of brown trout? _____
5. What waterway has only one lock? _____
What is unusual about this lock? _____
6. Name the navigation where zoning applies? _____

True or False

1. Lough Ree on the River Shannon is where the counties of Longford, Westmeath and Roscommon meet _____
2. The locks on the River Barrow are operated by using a smart card _____
3. The Lower Bann flows into Lough Allen _____
4. The Grand Canal meanders its way through the Bog of Allen _____
5. The Lower Bann links the Erne System with the Shannon Navigation _____
6. The towns of Tullamore, Belleek and Ballinasloe are situated along the Royal Canal _____
7. There are sixteen locks on the Shannon-Erne waterway which links two of Irelands major rivers, the Shannon and the Erne _____
8. It was the Grand Canal that allowed the Guinness Brewery to thrive, for without it, the famous stout may never have reached beyond Dublin's borders _____
9. The River Shannon rises in the Cuilcagh Mountain _____
10. The Giant's Causeway is situated close to the beautiful River Barrow _____

The Waterways Word Search!

The word search below contains the names of the inland waterways managed by Waterways Ireland along with terms and activities associated with the waterways. See if you can find all 20! The first one is done for you.

Erne System	Shannon Erne	Source	Sailing
Shannon	Barrow	Mouth	Fishing
Royal Canal	Meander	Estuary	Canoeing
Lower Bann	Confluence	Channel	Kayaking
Grand Canal	Tributary	Cruising	Water Skiing

R	G	T	H	I	E	C	R	U	O	S	O	B	Q	R	H
C	W	L	E	N	N	A	H	C	O	H	A	T	C	Q	F
F	A	S	R	E	D	N	A	E	M	R	E	G	O	K	H
I	T	E	E	K	L	O	W	E	R	B	A	N	N	L	L
P	E	G	S	E	H	E	O	O	G	E	G	Y	F	E	I
G	R	N	D	R	O	I	W	L	R	K	R	R	L	Q	R
A	S	I	R	N	N	N	D	D	A	A	P	A	U	Y	T
O	K	H	S	E	Y	G	G	C	N	Y	N	T	E	O	P
E	I	S	A	S	N	N	S	E	D	A	O	U	N	D	E
S	I	I	I	Y	I	O	E	N	C	K	N	B	C	C	A
I	N	F	L	S	S	X	N	L	A	I	N	I	E	M	D
L	G	H	I	T	Q	O	A	N	N	N	A	R	R	H	S
O	N	U	N	E	N	Y	J	V	A	G	H	T	U	O	M
E	R	H	G	M	O	H	A	S	L	H	S	S	N	O	S
C	E	A	Y	R	A	U	T	S	E	T	S	O	J	K	P
I	K	L	W	T	C	A	T	O	I	F	J	N	E	J	E

Worksheet 1

River Study

Answer these questions as you move along the river bank

1. What is the name of the river?

2. Where is its source?

3. Where is its mouth?

4. Are you nearest to the source, the middle or the mouth?

5. What is name of the nearest confluence?

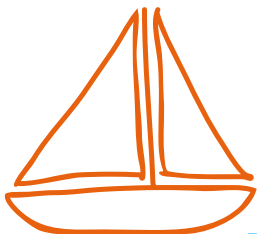
6. What is the nearest town to this part of the river?

7. How is the river used?

8. Is the area flat or hilly?

9. What is the ground like? Is it chalky, stoney, rocky, sandy etc?

10. Can you see any river features e.g. meanders, erosion etc? Sketch the ones you have seen.



Worksheet 1

River Study



11. Can you see any evidence of humans controlling the river?

12. Can you see any wildlife? Are you surprised by the amount you have seen?

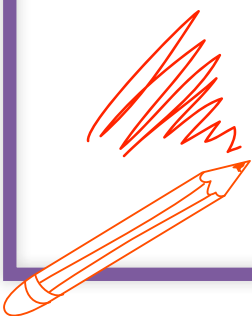
13. Have any of the animals made homes in the river bank?

14. What advantages/disadvantages are there of wildlife living in a town or city?

15. Can you see any signs of pollution?

16. Why is it particularly dangerous for a river to be polluted at its source?

Please write down or draw anything else of interest.



Worksheet 2

Canal Study

Answer these questions as you move along the canal.

1. What is the name of the canal?

2. Where is its source?

3. Where is its mouth?

4. Are you nearest to the source, the middle or the mouth?

5. What is the name of the nearest confluence?

6. What is the nearest town to this part of the canal?

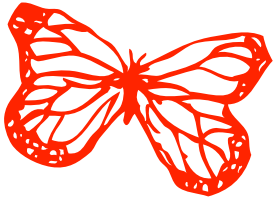
7. How is the canal used?

8. Is the area flat or hilly?

9. What is the ground like? Is it chalky, stoney, rocky, sandy etc?

10. Can you see any canal features e.g. meanders, erosion etc. Sketch the ones you have seen.





Worksheet 2

Canal Study



11. Can you see any evidence of humans controlling the canal?

12. Can you see any wildlife? Are you surprised by the amount you have seen?

13. Have any of the animals made homes in the canal bank?

14. What advantages/disadvantages are there of wildlife living in a town or city?

15. Can you see any signs of pollution?

16. Why is it particularly dangerous for a canal to be polluted at its source?

Please write down or draw anything else of interest.

